

Töömasinarehvide hinnakiri

Põllumajandustraktorite metsarehvid

kood	mõõt	indeksid	muster	jaehind km-ga
T482192	12.4 - 24	128 A8	TR FS Forest	716,4
T482198	13.6 - 24	128 A8	TR FS Forest	759,6
T482220	14.9 - 24	138 A8	TR FS Forest	872,4
T483150	13.6 - 28	130 A8	TR FS Forest	754,8
T445409	14.9 - 28	140 A8	TR Forest	1026
T483301	16.9 - 28	145 A8	TR Forest	1156,8
T483810	16.9 - 30	144 A8	TR FS Forest	1177,2
T484390	16.9 - 34	146 A8	TR FS Forest	1362
T484420	18.4 - 34	154 A8	TR FS Forest	1582,8
T485430	18.4 - 38	155 A8	TR Forest	1788
T485450	20.8 - 38	159 A8	TR Forest	2085,6



TR Forest

TR Forest Multiplus radiaalrehvid

kood	mõõt	indeksid	muster	jaehind km-ga
T445411	500/65 R28	144 A8 / 141 B	TR Multiplus	1477,2
T445412	540/65 R28	149 A8 / 146 B	TR Multiplus	1658,4
T445414	600/65 R38	159 A8 / 156 B	TR Multiplus	2446,8
T445415	650/65 R38	164 A8 / 160 B	TR Multiplus	2619,6



TR Multiplus

Nordman metsarehvid

kood	mõõt	indeksid	muster	jaehind km-ga
T445527	600/55-26.5	20 PR	NORDMAN FOREST SF TT	2391,6
T445474	710/45-26.5	16 PR	NORDMAN FOREST SF TT	2431,2
T445475	600/65-34	14 PR	NORDMAN FOREST SF TT	2730
T445476	700/55-34	14 PR	NORDMAN FOREST SF TT	3146,4



Nordman Forest TT



Tireman OÜ hulgimüük :

Tallinn: 605 60 85, 605 60 82; Tartu: 737 18 51; Pärnu: 443 90 81; Rakvere: 322 74 11

Töömashinarehvide hinnakiri

Forest King torkekindlad rehvid (SF)

kood	mõõt	indeksid	muster	jaehind km-ga
T486034	600/50 - 22,5	16 PR	Forest King ELS L-2 SF	1954,8
T445477	600/50 - 22,5	20 PR	Forest King TRS L-2 SF	2233,2
T445339	650/60 - 26,5	12 PR	Forest King TRS L-2 SF	2943,6
T445395	650/60 - 26,5	20 PR	Forest King TRS L-2 SF	3339,6
T445421	710/40 - 22,5	16 PR	Forest King TRS L-2 SF	2224,8
T445225	750/55 - 26,5	20 PR	Forest King TRS L-2 SF	3816
T486510	23.1 - 26	16 PR	Forest King TRS LS-2 SF	2845,2
T445516	28L - 26	26 PR	Forest King TRS LS-2 SF	3328,8
T445529	30.5L - 32	20 PR	Forest King TRS LS-2 SF	5134,8
T445515	30.5L - 32	26 PR	Forest King TRS LS-2 SF	5299,2
T445366	710/40 - 22,5	16 PR	Forest King F SF	2292
T445397	710/40 - 24.5	20 PR	Forest King F SF	2769,6
T445340	600/55 - 26,5	20 PR	Forest King F SF	2943,6
T445336	710/45 - 26,5	16 PR	Forest King F SF	3106,8
T445311	710/45 - 26,5	20 PR	Forest King F SF	3294
T445523	710/45 - 26,5	24 PR	Forest King F SF	3622,8
T445333	750/55 - 26,5	20 PR	Forest King F SF	3844,8
T445454	780/55 - 26,6	20 PR	Forest King F SF	4161,6
T445296	800/40 - 26,5	20 PR	Forest King F SF	3615,6
T445365	620/75 - 26	159 A8 / 167 A2	Forest King T SF	3085,2
T445314	540/70 - 30	152 A8 / 159 A2	Forest King T SF	2520
T445313	650/75 - 38	168 A8 / 175 A2	Forest King T SF	4004,4
T486066	650/65 - 26,5	20 PR	Forest King ELS L-2 SF	3474
T445472	600/50 R24.5	164 A8 / 171 A2	Forest Rider SB	2845,2
T445436	650/45 R24.5	161 A8 / 168 A2	Forest Rider SF	3189,6
T445320	600/55 R26,5	165 A8 / 172 A2	Forest Rider SF	3139,2
T445408	710/45 R26,5	168 A8 / 175 A2	Forest Rider SF	3386,4
T445462	800/50 R26,5	177 A8 / 184 A2	Forest Rider SB	4322,4
T445466	600/60 R28	159 A8 / 167 A2	Forest Rider SB	2478
T445461	600/70 R30	165 A8 / 172 A2	Forest Rider SB	3172,8
T445460	600/65 R34	165 A8 / 172 A2	Forest Rider SB	3397,2
T445455	710/55 R34	171 A8 / 176 A2	Forest Rider SB	3828
T445517	710/70 R34	176 A8 / 183 A2	Forest Rider SB	4600,8
T445457	650/85 R38	179 A8 / 186 A2	Forest Rider SB	4575,6
T445464	650/65 R38	171 A8 / 178 A2	Forest Rider SB	3763,2



Forest King TRS L-2



Forest King TRS



Forest Rider SF / SB



Forest King F



Forest King T



Forest King ELS L-2



TRS LS-2



Tireman OÜ hulgimüük :

Tallinn: 605 60 85, 605 60 82; Tartu: 737 18 51; Pärnu: 443 90 81; Rakvere: 322 74 11

Töomasinarehvide hinnakiri

Eriotstarbelised põllumajandus- ja metsandus- radiaalrehvid

kood	mõõt	indeksid	muster	jaehind km-ga
T445249	500/60 R22,5	146 D	ELS Radial	1077,6
T445292	600/50 R22,5	156 D	ELS Radial	1240,8
T445348	710/45 R22,5	156 D	ELS Radial	1576,8
T445146	600/55 R26,5	158 D	ELS Radial	1576,8
T445227	700/50 R26,5	161 D	ELS Radial	1773,6
T445317	750/55 R26,5	164 D	ELS Radial	2350,8
T492100	550/60 R22,5	151 D	ELS Radial	1386
T445297	560/45 R22,5	151 D	ELS Radial	1146
T445453	500/60 R22,6	155 D	Country King	1024,8
T445402	560/45 R22,5	152 D	Country King	1046,4
T445401	560/60 R22,5	161 D	Country King	1263,6
T445405	580/65 R22,5	166 D	Country King	1462,8
T445441	600/50 R22,5	159 D	Country King	1398
T445407	650/50 R22,5	163 D	Country King	1518
T445404	620/60 R26,5	169 D	Country King	1773,6
T445440	650/65 R26,5	171 D	Country King	2212,8
T445496	710/45 R22,5	165 D	Country King	tulemas
T445406	710/50 R26,5	170 D	Country King	2030,4



ELS Radial / ELS SB



Country King

Eriotstarbelised tugevdatud radiaalrehvid

T445465	650/65 R26.5	174 D	ELS SB	2143,2
T445497	650/65 R30.5	176 D	ELS SB	2553,6
T445470	710/55 R34	177 D	ELS SB	2553,6
T445501	750/55 R34	180 D	ELS SB	3123,6
T445498	750/60 R30.5	181 D	ELS SB	3361,2
T445469	800/50 R34	181 D	ELS SB	3090
T445500	800/60 R34	186 D	ELS SB	3514,8
T445502	850/45 R34	181 D	ELS SB	3382,8
T445499	850/50 R30.5	182 D	ELS SB	3498



Tireman OÜ hulgimüük :

Tallinn: 605 60 85, 605 60 82; Tartu: 737 18 51; Pärnu: 443 90 81; Rakvere: 322 74 11

Töomasinarehvide hinnakiri

Tööstustraktorite radiaalrehvid

kood	mõõt	indeksid	muster	jaehind km-ga
T845495	250/80 R16	119 G	TRI 2 Steel	441,6
T445245	460/65 R24	156 A8 / 151 D	TRI Steel	1425,6
T445222	480/65 R24	151 A8 / 146 D	TRI Steel	1600,8
T445419	300/80 R24	133 A8 / 128 D	TRI 2	778,8
T445391	340/80 R18	143 A8 / 138 D	TRI 2	796,8
T445389	360/80 R20	147 A8 / 143 D	TRI 2	990
T445376	340/80 R24	140 A8 / 135 D	TRI 2	937,2
T445378	360/80 R24	143 A8 / 138 D	TRI 2	1011,6
T445372	400/80 R24	149 A8 / 144 D	TRI 2	1179,6
T445530	400/80 R24	149 A8 / 144 D	TRI 2 EXTREME STEEL	1261,2
T445392	420/65 R24	151 A8 / 146 D	TRI 2	1165,2
T445385	440/80 R24	154 A8 / 149 D	TRI 2	1365,6
T445531	440/80 R24	154 A8 / 149 D	TRI 2 EXTREME STEEL	1460,4
T445393	460/65 R24	156 A8 / 151 D	TRI 2	1388,4
T445420	540/65 R24	158 A8 / 154 D	TRI 2	1749,6
T445383	400/80 R28	151 A8 / 146 D	TRI 2	1448,4
T445337	440/80 R28	156 A8 / 151 D	TRI 2	1531,2
T445532	440/80 R28	156 A8 / 151 D	TRI 2 EXTREME STEEL	1638
T445444	480/65 R28	154 A8 / 149 D	TRI 2	1568,4
T445442	540/65 R28	160 A8 / 155 D	TRI 2	1748,4
T445384	440/80 R30	157 A8 / 153 D	TRI 2	1732,8
T445386	480/80 R30	162 A8 / 175 D	TRI 2	1938
T445371	540/65 R30	161 A8 / 156 D	TRI 2	1972,8
T445369	440/80 R34	159 A8 / 155 D	TRI 2	1891,2
T445370	480/80 R34	164 A8 / 159 D	TRI 2	2036,4
T445533	480/80 R34	164 A8 / 159 D	TRI 2 EXTREME STEEL	2179,2
T445377	480/80 R38	166 A8 / 161 D	TRI 2	2278,8
T445534	480/80 R38	166 A8 / 161 D	TRI 2 EXTREME STEEL	2438,4
T445338	540/80 R38	172 A8 / 167 D	TRI 2	2653,2
T445535	540/80 R38	172 A8 / 167 D	TRI 2 EXTREME STEEL	2839,2
T445518	620/80 R42	181 A8 / 177 D	TRI 2	3912
T445443	650/65 R38	175 A8 / 170 D	TRI 2	3060
T445445	650/65 R38	170 A8 / 166 D	TRI 2	2796
T445390	650/65 R42	176 A8 / 171 D	TRI 2	3415,2
T445467	500/70 R24	164 A8 / 159 D	TRI 2 Steel	1833,6
T445330	18.4 B30	159 B	TRI	1944
T445293	580/65 B30	161 B	TRI	2338,8
T445294	580/65 B34	164 B	TRI	2550



TRI / TRI Steel



TRI 2 / TRI 2 Steel



Tireman OÜ hulgemüük :

Tallinn: 605 60 85, 605 60 82; Tartu: 737 18 51; Pärnu: 443 90 81; Rakvere: 322 74 11

Töömasinarehvide hinnakiri

Greiderirehvid

kood	mõõt	indeksid	muster	jaehind km-ga
T493551	14.00 R24	153 A8	GRS	1666,8
T493560	17.5 R25	153 A8	GRS	2113,2



GRS

Laadurirehvid

kood	mõõt	indeksid	muster	jaehind km-ga
T445171	20.5 R25	168 B / 186 A2	Loader Grip L-3	2653,2
T445223	23.5 R25	176 B / 195 A2	Loader Grip L-3	3277,2
T445255	17.5 R25	157 B / 176 A2	Loader Grip L-3	1758
T445463	15.5 R25	152 B / 169 A2	Loader Grip 2	1666,8



Loader Grip L-3

Greideri- ja laadurirehvid

kood	mõõt	indeksid	muster	jaehind km-ga
T445380	600/50 - 22,5	20 PR	Excavator TRS LS-2 SF	2152,8
T445381	700/45 - 22,5	20 PR	Excavator TRS LS-2 SF	2473,2



Loader Grip 2

Maastikurehvid

kood	mõõt	indeksid	muster	jaehind km-ga
T445231	14.00 R20	164 G	MPT Agile	1778,4
T445431	365/80 R20	152 G	MPT Agile	1084,8



MPT Agile



Excavator TRS LS-2



Tireman OÜ hulgimüük :

Tallinn: 605 60 85, 605 60 82; Tartu: 737 18 51; Pärnu: 443 90 81; Rakvere: 322 74 11

Töomasinarehvide hinnakiri

Sadamarehvid

kood	mõõt	indeksid	muster	jaehind km-ga
T445471	14.00 - 24	28 PR	RTG TL	2220
T488311	14.00 - 24	28 PR	HTS E-3	2361,6
T488431	16.00 - 25	36 PR	HTS E-4	4034,4
T445418	16.00 R25		HARBOUR STRADDLE TL	2984,4
T445468	18.00 - 25	40 PR	RTG E-3 TL	4287,6
T488530	18.00 - 25	40 PR	HTS E-4	4910,4
T445329	18.00 - 25	40 PR	HTS L-4 S	5520
T445514	18.00 - 33	40 PR	HTS E-4	6202,8
T445458	18.00 - 33	40 PR	HTS E-4	6567,6
T445221	315/60 R22,5	174 A5	HTS Tugger	1042,8



RTG



Industrial Mine



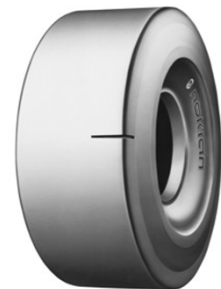
HTS E-3 / E-4
Kaevandusrehvid



HTS Tugger



Nordman Mine E-4



Mine L-5 S



Armor Gard

kood	mõõt	indeksid	muster	jaehind km-ga
T487630	12.00 - 20	20 PR	Mine L-5 S	1890
T445446	14.00 - 24	28 PR	Industrial Mine	1992
T445456	14.00 - 24	28 PR	E-3 Mine	2377,2
T445326	17.5 - 25	20 PR	Mine L-5 S	3644,4
T445325	18.00 - 25	28 PR	Mine L-5 S	5659,2
T445324	26.5 - 25	36 PR	Mine L-5 S	8670
T445522	26.5 - 26	36 PR	Mine L-3 S	6741,6
T845492	18.00 - 25		Nordman Mine L-5S	tulemas
T845493	17.5 - 25		Nordman Mine L-5S	tulemas
T845494	12.00 - 20		Nordman Mine L-5S	tulemas
T845483	26.5 R25	193 B / 209 A2	Nordman Mine E-4	6018,00
T845482	29.5 R25	200 B / 216 A2	Nordman Mine E-4	7830,00

Rasketööstusrehvid

kood	mõõt	indeksid	muster	jaehind km-ga
T445451	10.00 - 20	16 PR	Armor Gard	830,4
T445450	11.00 - 20	16 PR	Armor Gard	876
T445459	12.00 - 20	20 PR	Armor Gard	1177,2
T445449	12.00 - 20	20 PR	Armor Gard Mine	1177,2



Tireman OÜ hulgimüük :

Tallinn: 605 60 85, 605 60 82; Tartu: 737 18 51; Pärnu: 443 90 81; Rakvere: 322 74 11

Töomasinarehvide hinnakiri

Metsamasinate, laadurite, greiderite siserehvid

kood	mõõt	ventiil	jaehind km-ga
T545229	540/65 R28 // 500/70 - 28	TR 218A	184,8
T545312	800/40 - 26,5	TR 218A	254,4
T545322	600/70 - 38 // 650/75 - 38	TR 218	462
T55089	600/50 - 22,5 // 600/55 R22,5	TR 218A	164,4
T55091	500/55 - 15,5 // 500/60 - 15,5	TR 15	103,2
T55092	700/45 - 22,5 // 710/40 - 22,5	TR 218A	170,4
T55094	400/55 - 22,5	TR 15	105,6
T55096	500/60 - 22,5 // 550/60 R22,5	TR 218A	136,8
T55097	500/60 - 26,5 // 540/60 R26,5 // 480/65 R28 // 500/65 R28	TR 218A	152,4
T55098	600/55 - 26,5	TR 218A	206,4
T545447	650/45-24.5	TR 218	180
T55099	700/50 - 26,5 // 710/45 - 26,5	TR 218A	254,4
T55100	11.2/12.4 - 24 // 380/65 - 24	TR 218A	92,4
T55101	28L - 26	TR 218A	244,8
T55102	650/65 - 26,5 // 750/55 - 26,5 // 620/75 - 26 // 23.10 - 26	TR 218A	246
T55105	13.6/12 - 24	TR 218A	99,6
T55112	14.9 - 24 // 16.9 - 24	TR 218A	128,4
T55121	16.9 - 26 // 18.4 - 26	TR 218	180
T55311	12.4 - 28 // 13.6 - 28	TR 218A	112,8
T55351	14.9 - 28 // 14.9 - 30 // 12.4 - 32	TR 218A	127,2
T55370	16.9 - 28	TR 218A	105,6
T55371	16.9 - 30 // 18.4 - 30 // 520/65 - 30 // 540/70 - 30	TR 218A	189,6
T55388	30.5 - 32 // 700/70 - 34	TR 218A	290,4
T55391	16.9 - 34 // 18.4 - 34	TR 218A	195,6
T55393	24.5 - 32	TR 218A	217,2
T55394	600/65 - 34 // 700/55 - 34	TR 218A	246
T55395	580/65 B34 // 520/65 - 34 // 600/65 - 34	TR 218A	242,4
T55430	16.9 - 38 // 18.4 - 38	TR 218A	184,8
T55445	20.8 - 38	TR 218A	154,8
T55451	14.00 - 24 // 17.5 - 25	TR 220A	148,8
T55767	14.00 - 24	TR 1175A	156
T56410	400/60 - 15,5	TR 15	74,4
T56435	550/45 - 22,5 // 560/45 R22,5	TR 218A	130,8
T545448	710/40 - 24,5	TR 218	180



Tireman OÜ hulgemüük :

Tallinn: 605 60 85, 605 60 82; Tartu: 737 18 51; Pärnu: 443 90 81; Rakvere: 322 74 11

Töömasinarehvide hinnakiri

Veoauto, tööstustraktorite siserehvid

kood	mõõt	ventiil	jaehind km-ga
T52520	9.00 - 20	TR 175	64,8
T52620	10.00 - 20	TR 78	73,2
T52720	11.00 - 20	TR 179	86,4
T52810	12.00 - 20	V3.02.16	102
T52920	14.00 - 20	TR 274	104,4
T55093	14.5 - 20	TR 150	108

Rehvikaelused

kood	mõõt		jaehind km-ga
T299520	6.50/7.00/7.50 - 20	FLAP 170 -20	38,4
T299530	8.25/9.00/10.00 - 20	FLAP 195 -20	46,8
T299537	11.00/12.00/13.00/14.00 - 20	FLAP 225 -20	51,6
T299538	14.00 - 20	FLAP 260 -20	52,8
T299531	13.00/14.00/16.00 - 24/25	FLAP 260 -24/25	84
T299540	20.5 - 25	FLAP 430 -25	123,6

T845503	Tire Pressure LED, Agri Specification	96
T845504	Tire Pressure LED, Forestry Specification	120
T845505	Tire Pressure LED, Ind./Harbour Specification	60



Tireman OÜ hulgimüük :

Tallinn: 605 60 85, 605 60 82; Tartu: 737 18 51; Pärnu: 443 90 81; Rakvere: 322 74 11